

EELS

Zoemma Warshafsky
Master's Student at VIMS

Types of eels

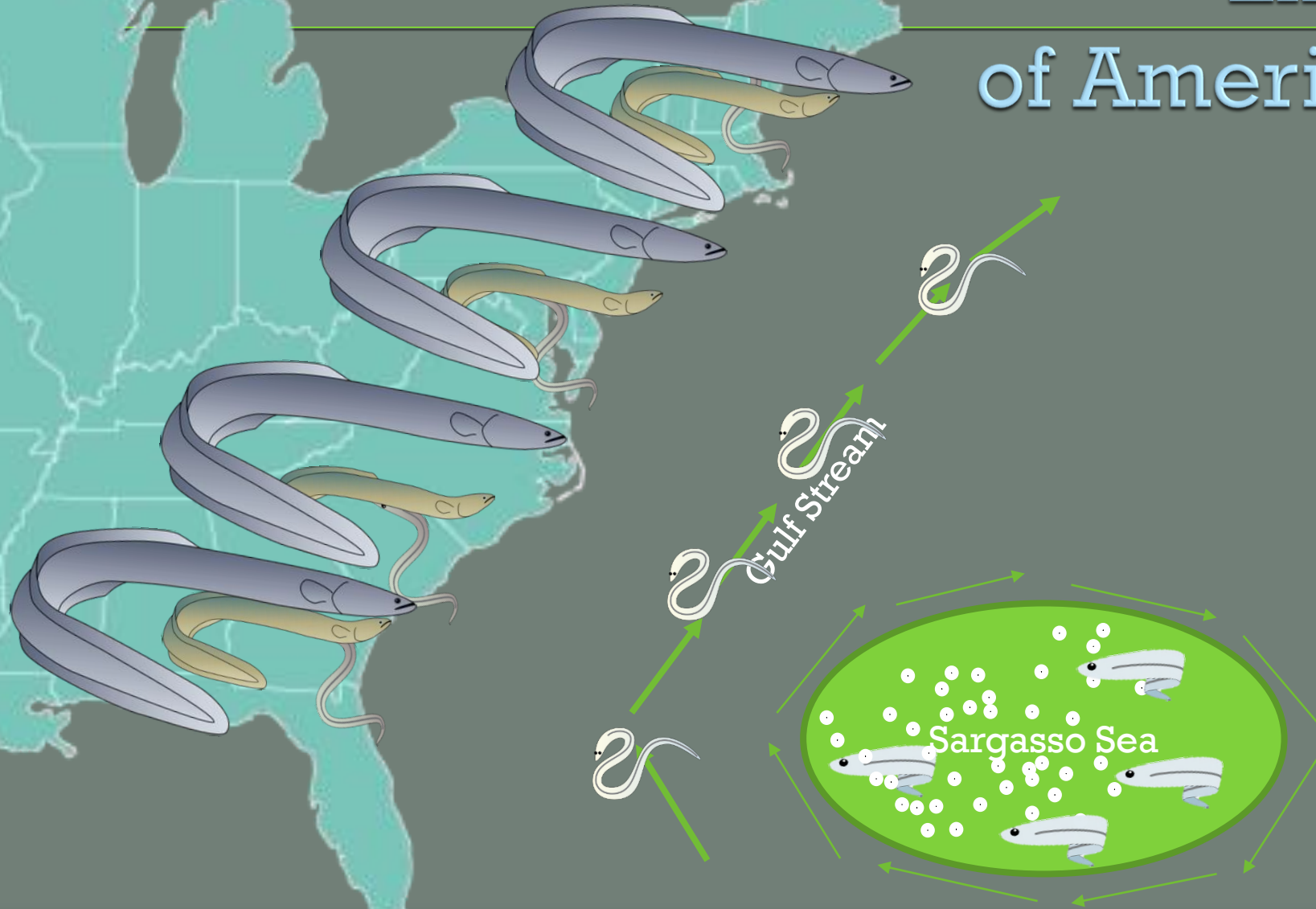


American eel

Garden eel

Snake eel

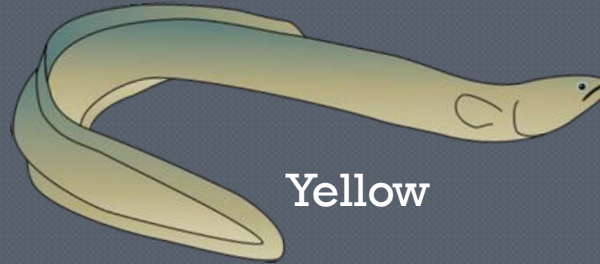
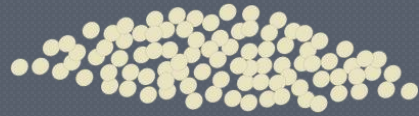
Life cycle of American eel



What do they eat



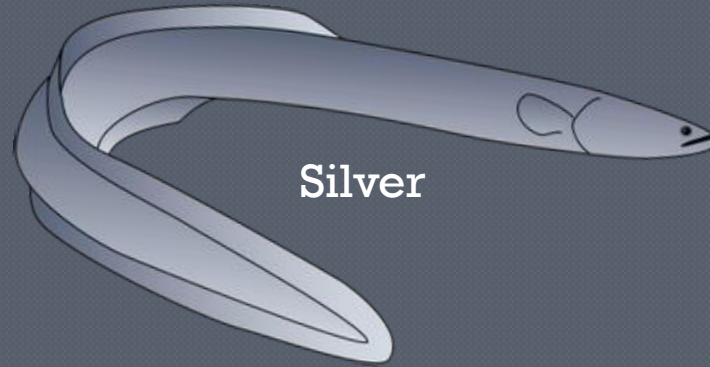
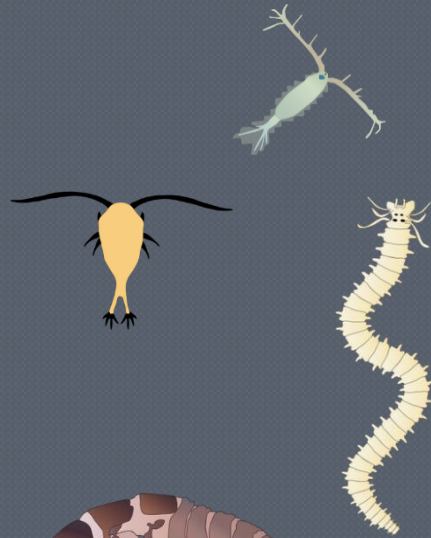
Leptocephali



Yellow



Glass



Silver



Elver

Who eats eels?



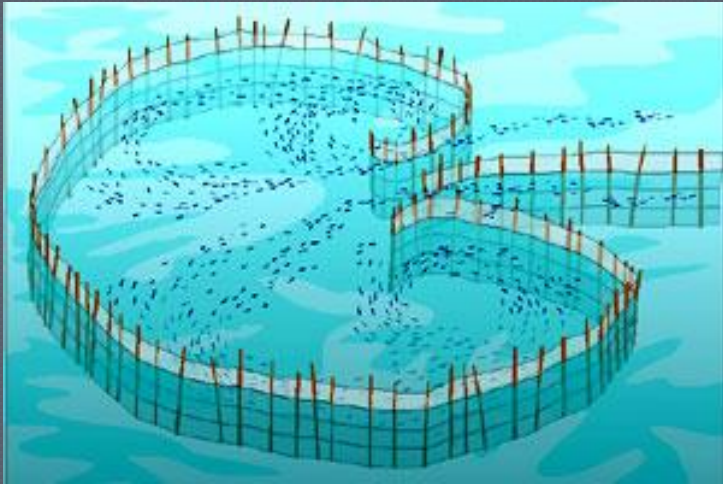
Fish



Humans!



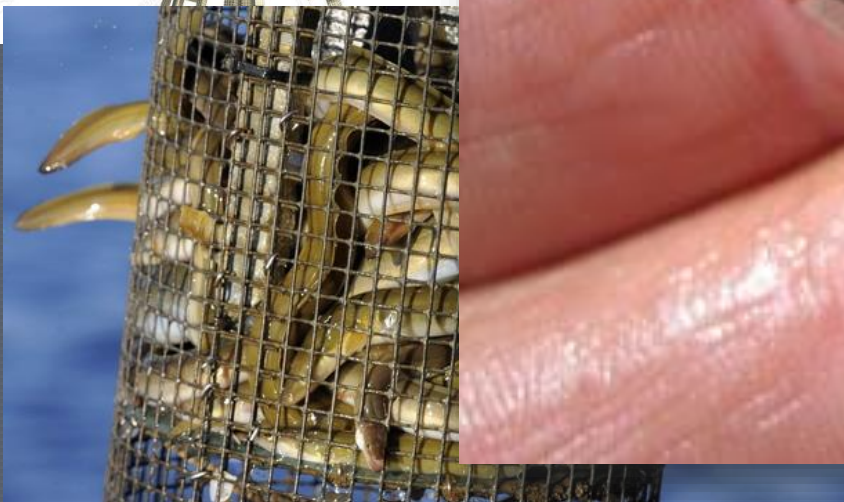
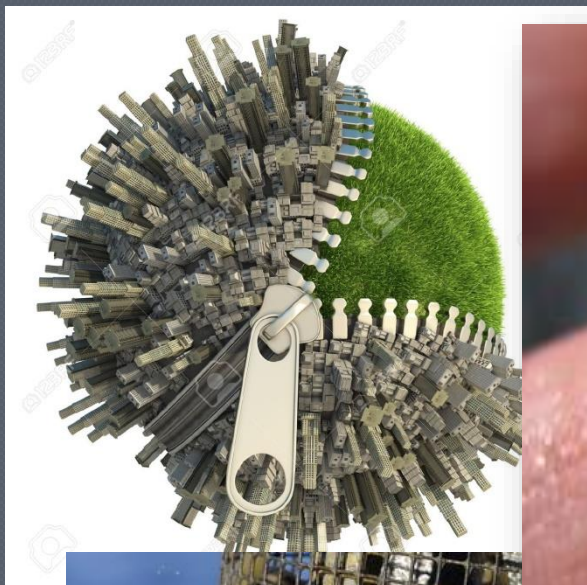
How to catch them



Eel fishery



Eel decline



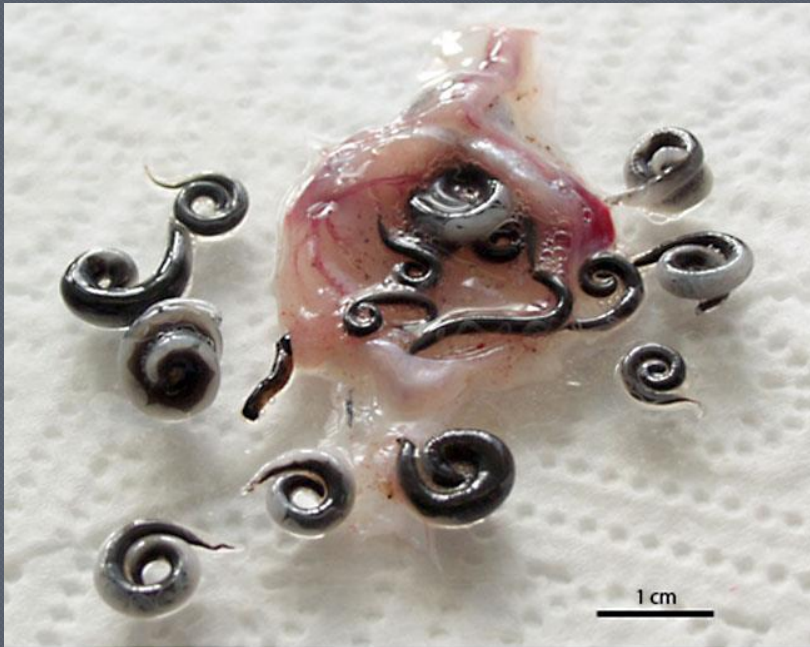
What is a parasite?

- An organism that lives in or on another organism (the host) and gets food from it and usually causes harm to it

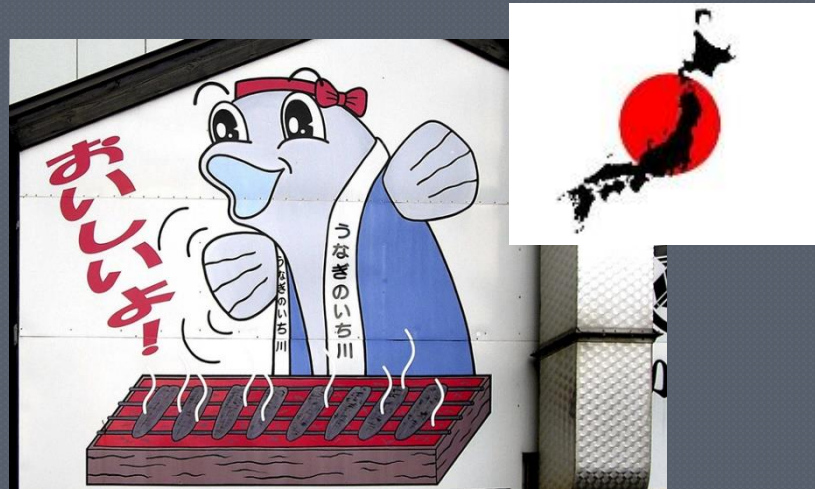


Anguillicoloides crassus

Bloodsucker



Nematode (worm)

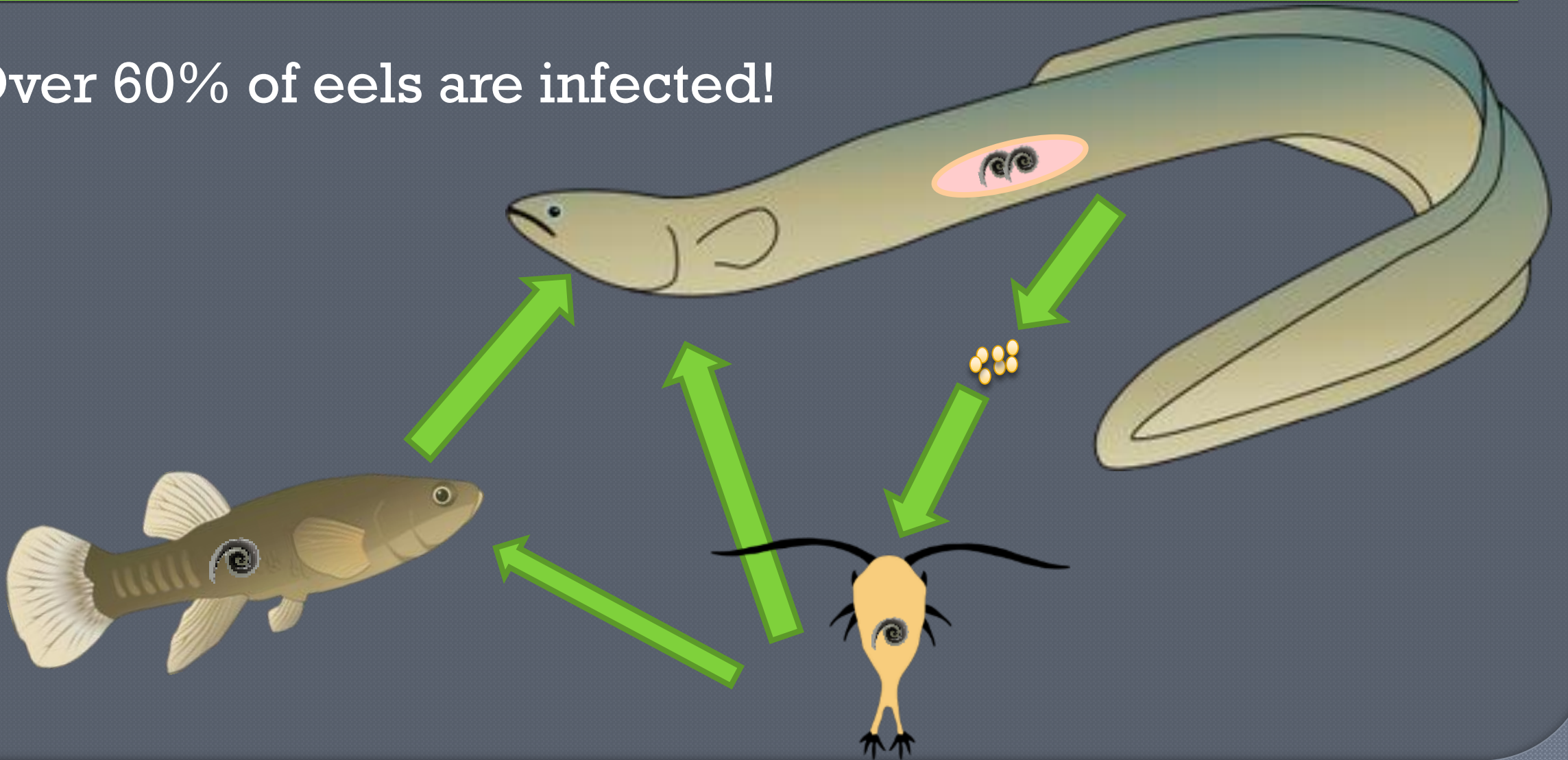


Invasive—from Japan



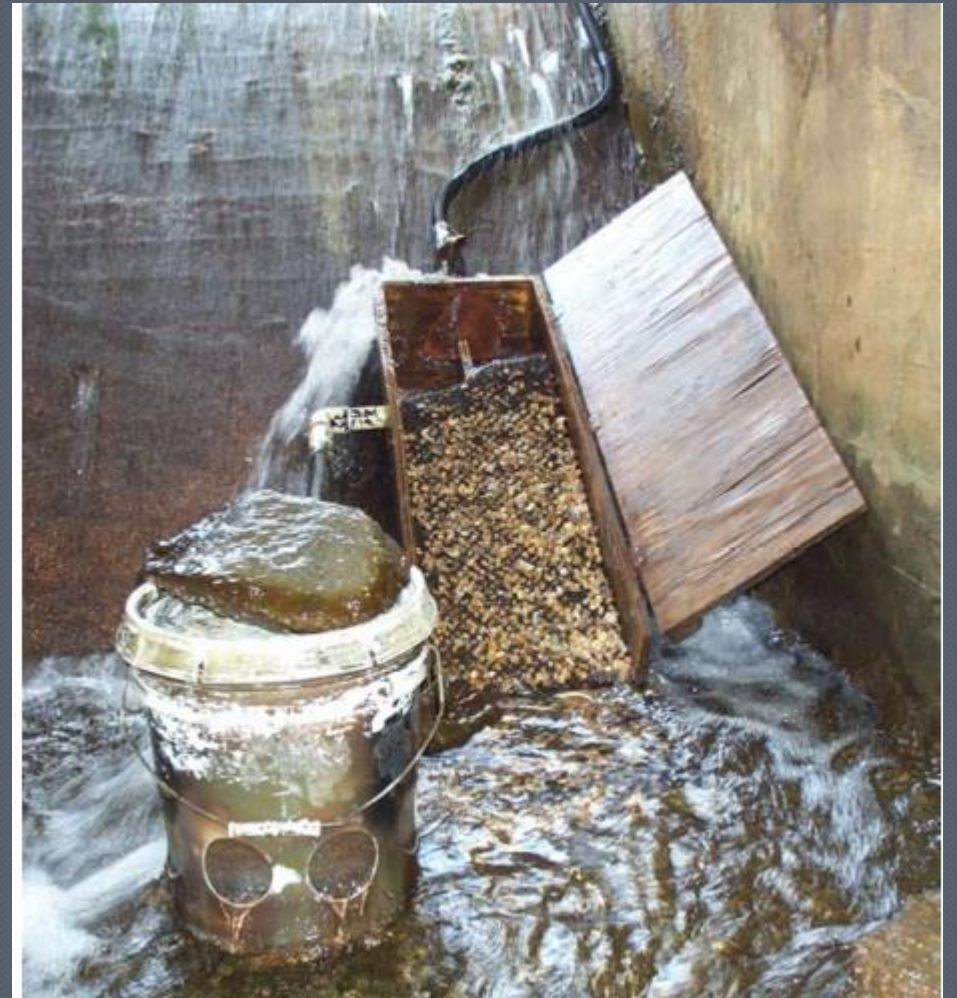
How do eels get infected?

Over 60% of eels are infected!



How do we study this?

- Collect eels from the wild!



How do we study this?

- Dissect them!



Swimbladder
containing
parasites



Swimbladder
with parasites
removed

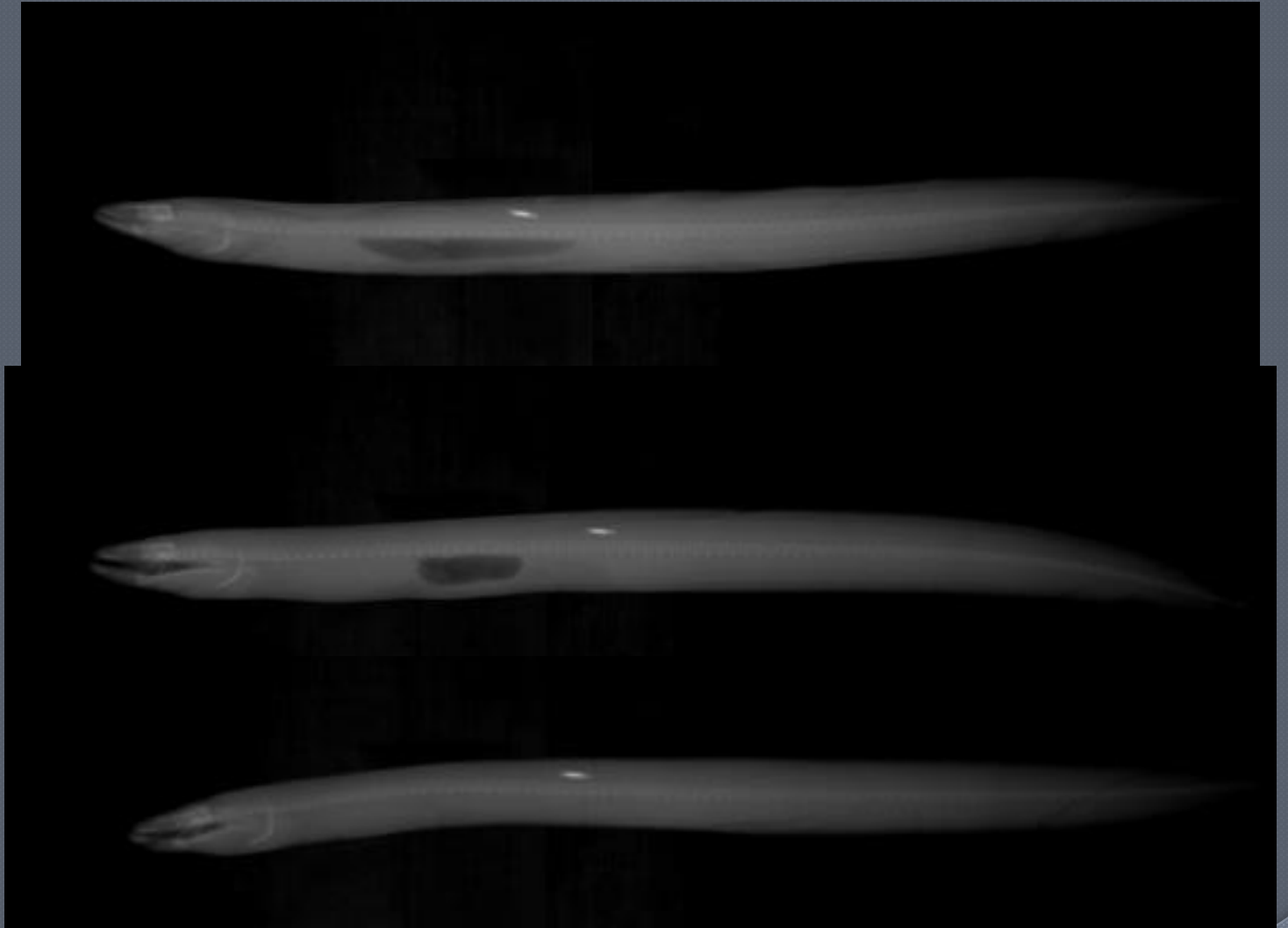
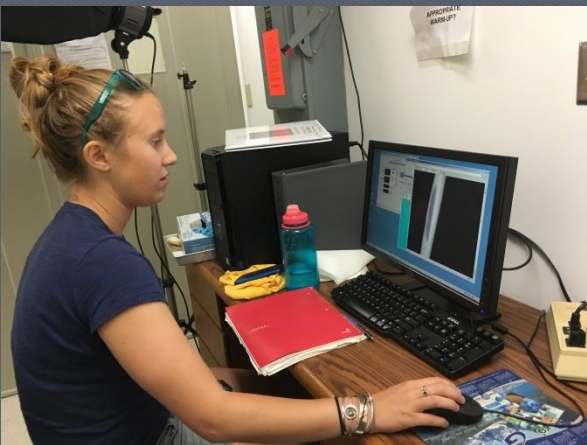
How do we study this?

- Look at their swimbladders under a microscope!



How do we study this?

- X-ray them!



What to do next?

- Limit spread of parasite
- More sustainably manage eels using parasite info
- Reduce other stressors and unfavorable environmental conditions

How does this parasite affect eels?

Higher predation



Impaired spawning



More easily caught



Environmental vulnerability



DANGER
Low
Oxygen level

Thank you!

